

- Opal diffuser - direct distribution

White steel frame for surface-mounting on ceiling and white powder-coated aluminium luminaire housing. Housing colour traffic white RAL 9016; External LED driver. Electric connection via 150mm long connection cable 2x0.5mm² including coupling connector. lowea luminaire and mounting frame.

CHARACTERISTICS

Order number	60114036610+60110005100
Commodity code	94051190
Certification mark	IP 20, Protection class II, F, Indoor, CE
Special properties	Ready for IoT
State funding programs	BEG - Federal funding for efficient buildings (valid only for Germany)

ELECTRICAL ENGINEERING

Controller	Electronic driver DALI2 (1 pcs.)
System output	39W
Mains voltage	230V/50Hz
Energy efficiency class/light source	C

LIGHTING TECHNOLOGY

Placement	LED, Colour rendering/Light colour CRI ≥ 80 / 4000K
Nominal luminous flux	5095lm
LED service life	50000h L80/B10
Luminaire luminous efficiency	130lm/W
UGR lat./long.	22.1 / 22.1

MECHANICS

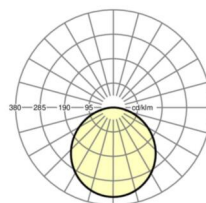
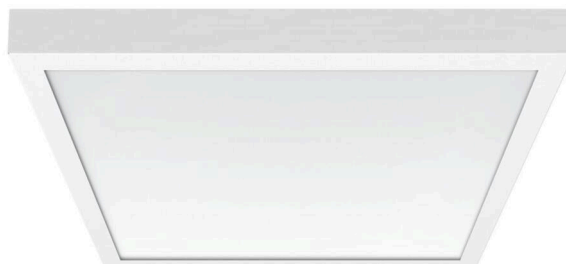
Housing colour	traffic white RAL 9016
Dimensions (LxWxDxH)	627mm x 627mm x 62mm
Depth	62mm
Weight (net)	6.49kg
Type of installation	Ceiling-mounted single installation

Dimensions

L	627 mm	Length
B	627 mm	Width
H	62 mm	Height
T	62 mm	Depth
KL	144 mm	Length luminaire head or box for ballasts
KB	42 mm	Width luminaire head or box for ballasts
KH	29 mm	Height luminaire head or box for ballasts

DEEP-LINK

<https://www.regiolux.de/en/article/60114036610+60110005100>



Reference	LED 5100lm 840
ηLB	100 %
Φ ↓/↑	100 % / 0 %
UGR lat./long.	22.1 / 22.1

